



# Abbington

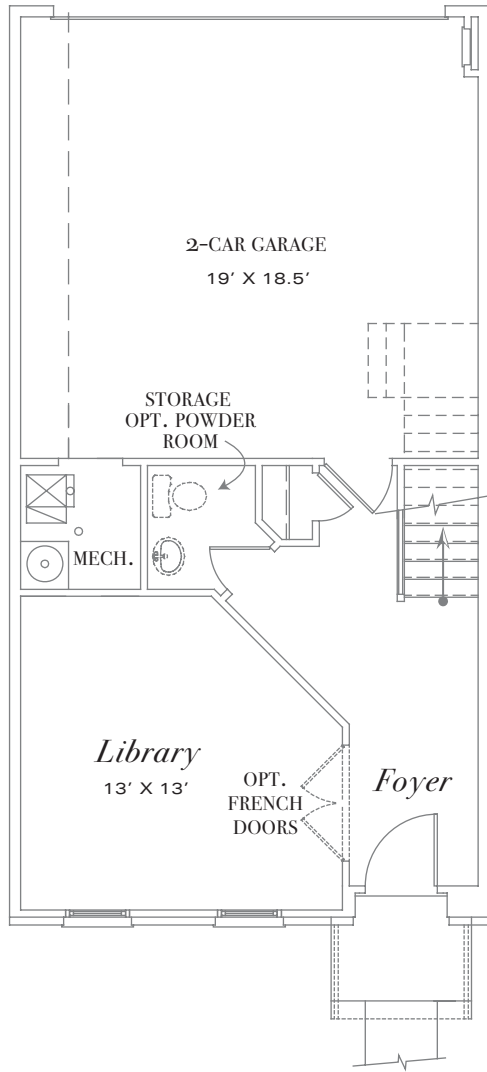
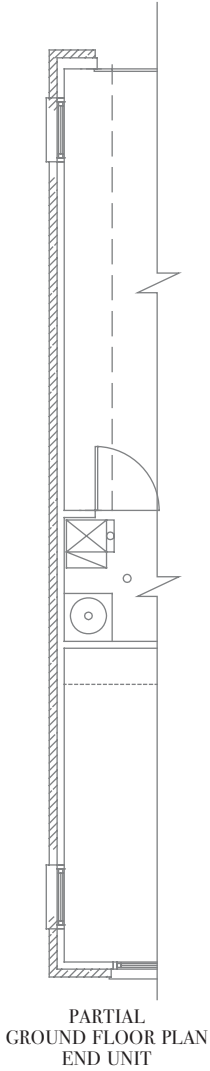
Inspired by traditional 18th century architecture,  
Grayson Hill presents classic modern homes for your enjoyment.  
Our homes exemplify gracious living by defining a new era of luxury lifestyle.

The Abbington is a spacious three-floor home with an open living  
and dining room, perfect for entertaining, a beautifully designed kitchen  
for the most accomplished chef with eat-in nook and access to a rear deck.

The home also features a two-car rear load garage.

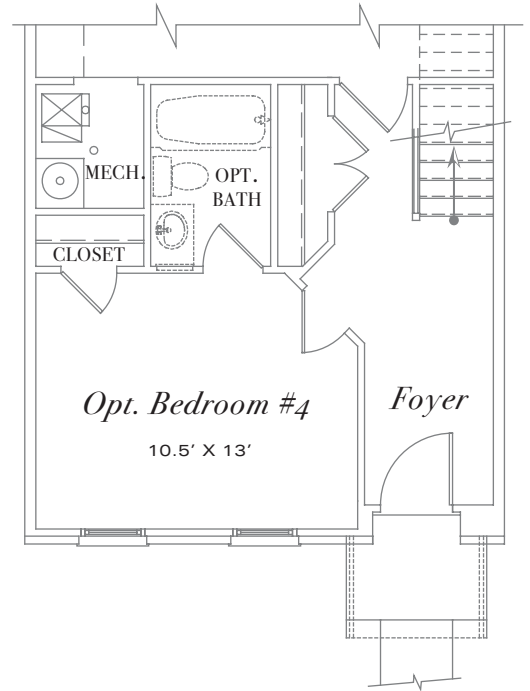
# Abbington

APPRX. 1,800 SQ. FT.  
SCALE: 1/8"=1'-0"



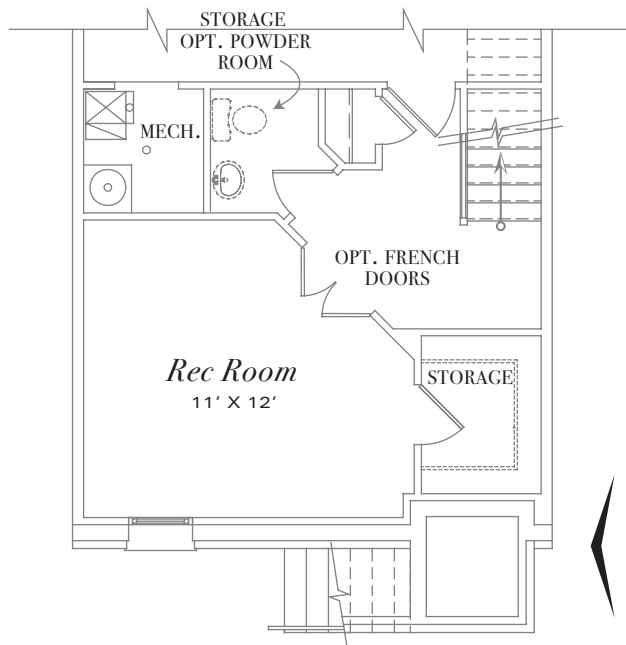
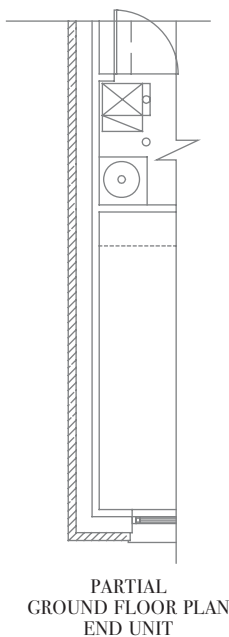
## GROUND FLOOR

CEILING: 8'



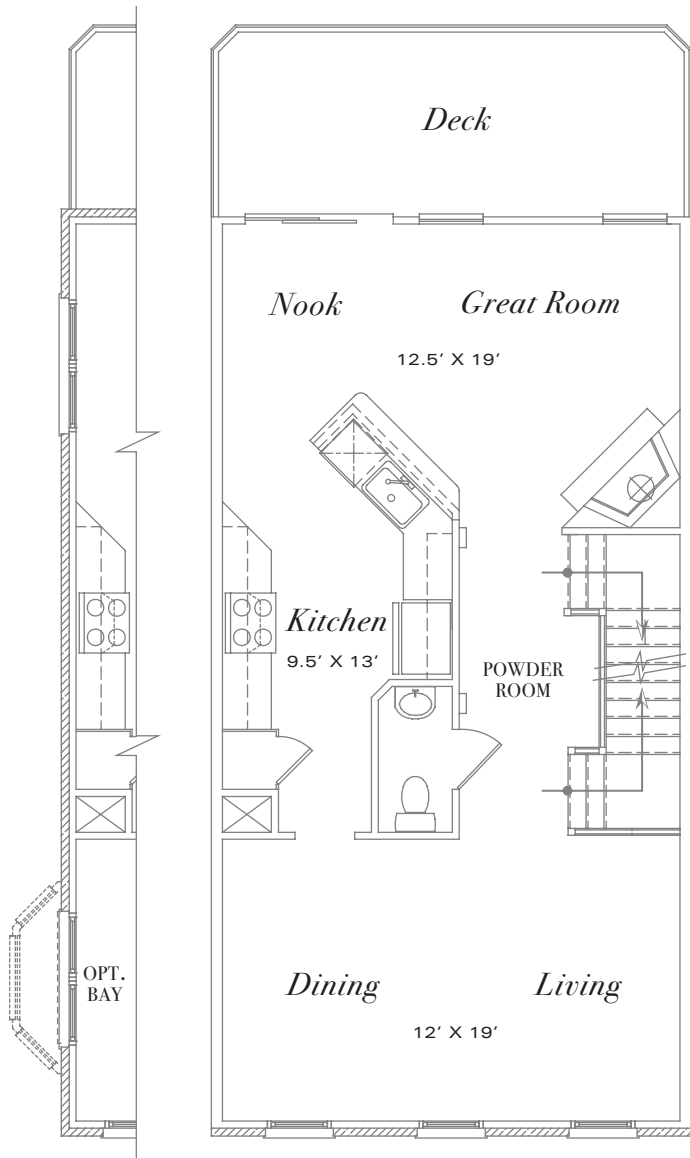
## PARTIAL GROUND FLOOR

WITH OPTIONAL BEDROOM #4



## PARTIAL GROUND FLOOR

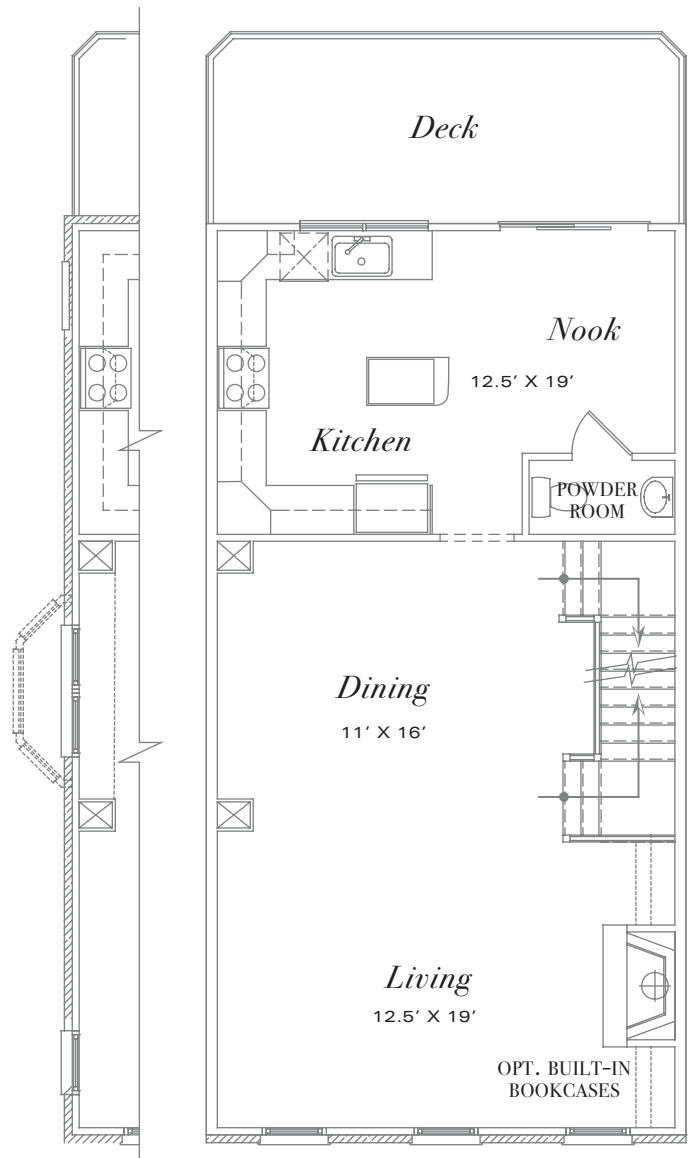
WITH ENGLISH BASEMENT



PARTIAL  
2ND FLOOR PLAN  
END UNIT

**STANDARD 2<sup>nd</sup> FLOOR**

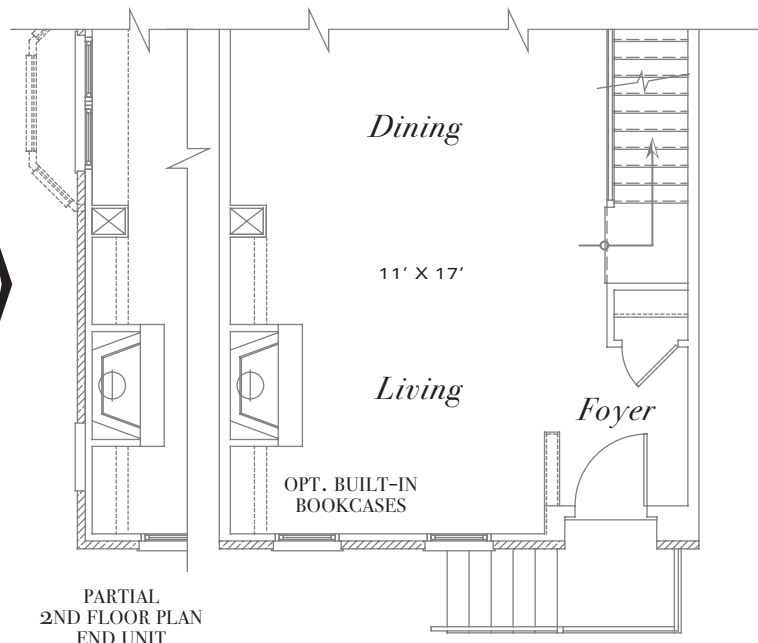
CEILING: 9'



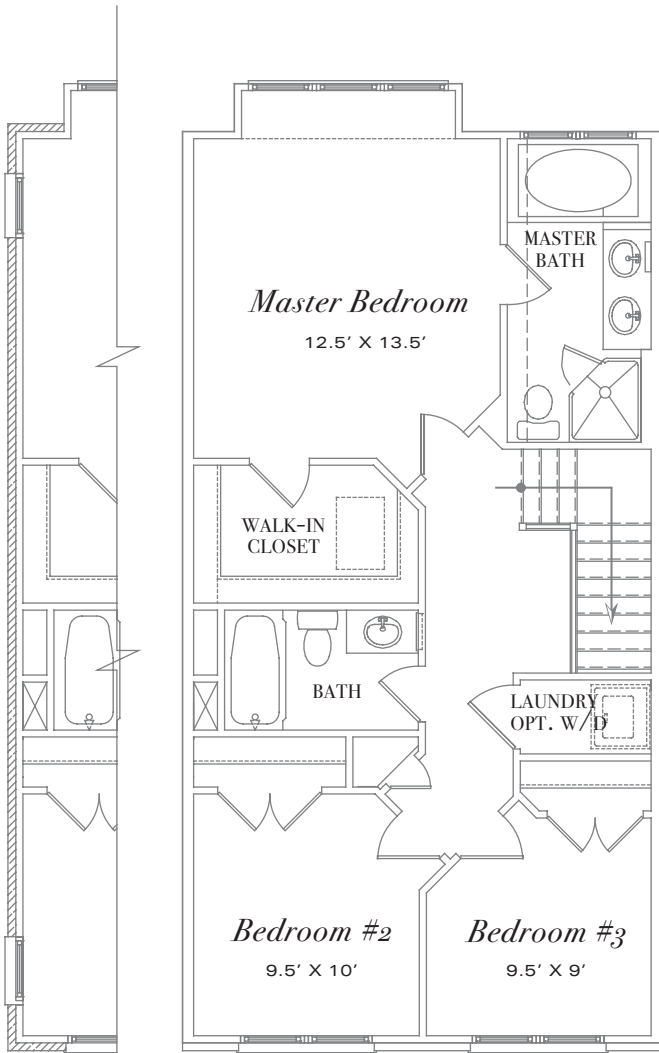
PARTIAL  
2ND FLOOR PLAN  
END UNIT

**ALTERNATE 2<sup>nd</sup> FLOOR**

**PARTIAL 2<sup>nd</sup> FLOOR**  
WITH ENGLISH BASEMENT



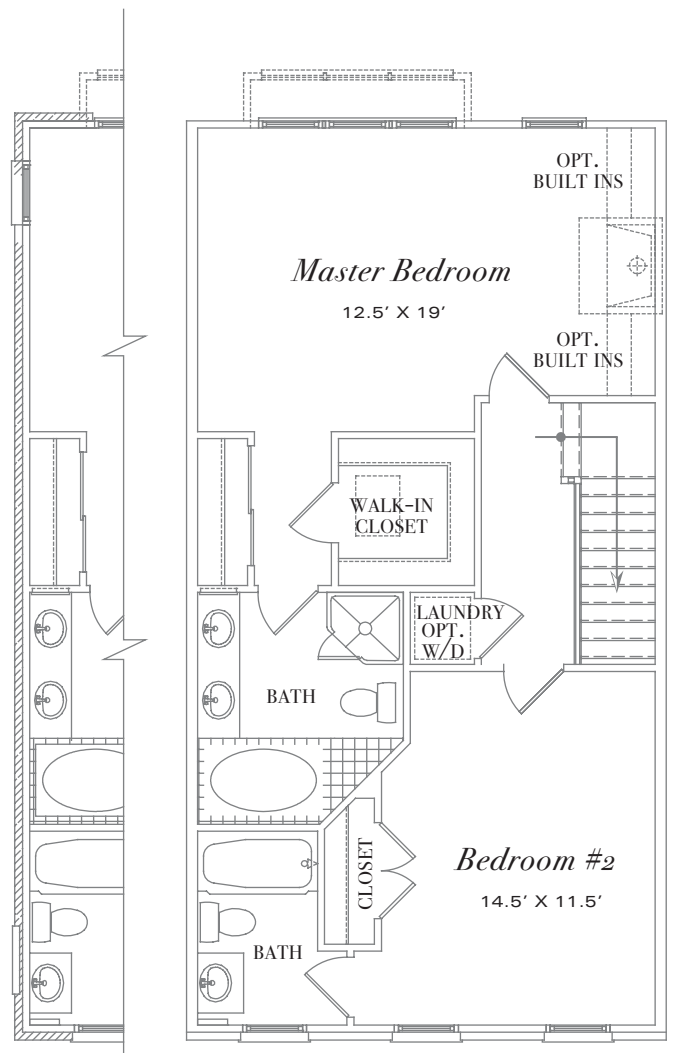
PARTIAL  
2ND FLOOR PLAN  
END UNIT



PARTIAL  
3RD FLOOR PLAN  
END UNIT

**3<sup>rd</sup> FLOOR**

CEILING: 8'



PARTIAL  
3RD FLOOR PLAN  
END UNIT

**ALTERNATE 3<sup>rd</sup> FLOOR**  
WITH OPTIONAL LARGER BEDROOM #2