



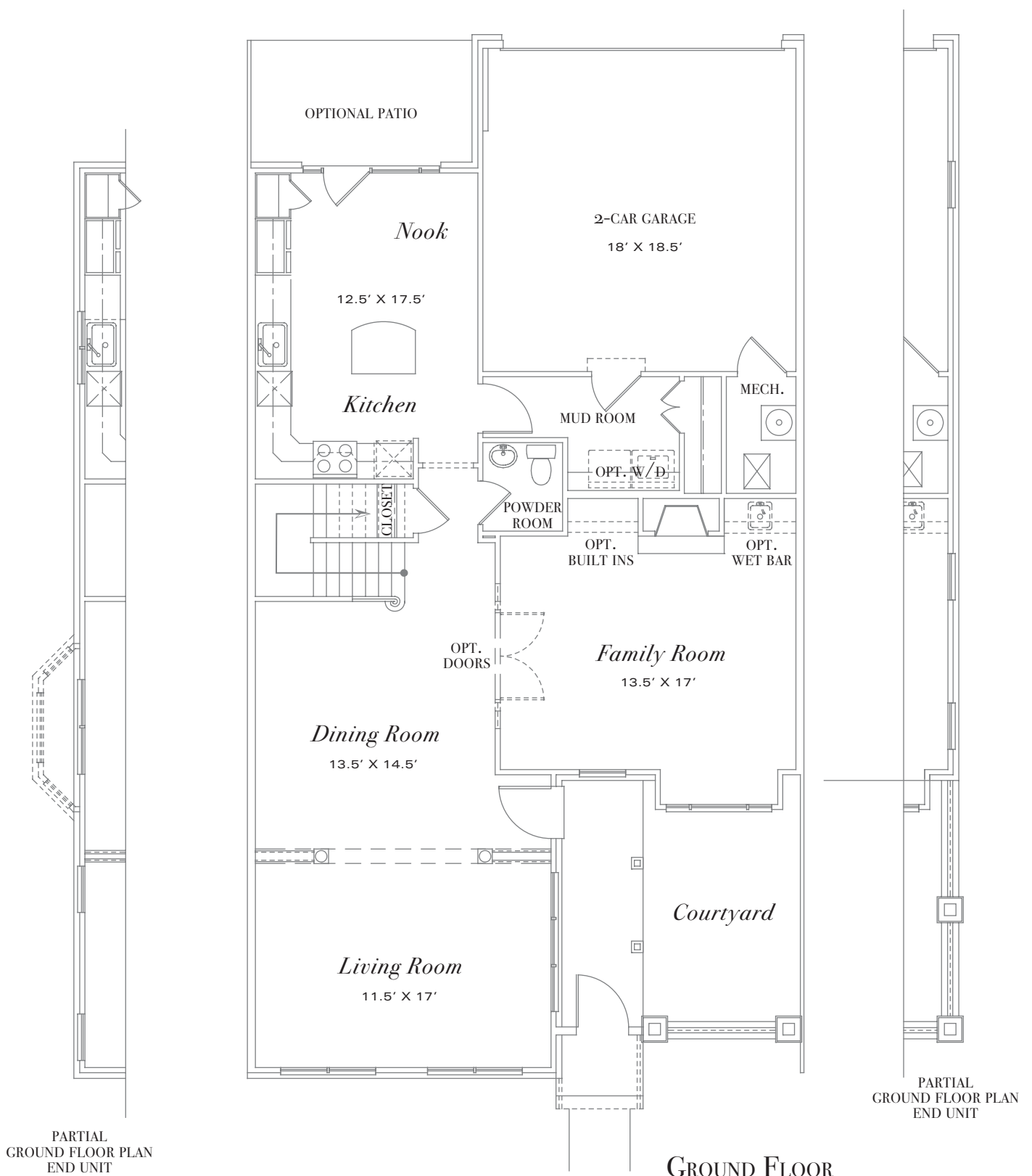
Banbury

Inspired by traditional 18th century architecture,

Grayson Hill presents classic modern homes for your enjoyment.

Our homes exemplify gracious living by defining a new era of luxury lifestyle.

Spacious and perfect for entertaining, the sophisticated Banbury features a large first floor family room with an inviting fireplace, formal living and dining rooms, and a cook's kitchen. The master suite includes a sitting room, his/her closets, and a romantic balcony overlooking a private walled courtyard. With its versatile floor plan, the Banbury's first floor boasts nine-foot ceilings and can be designed to accommodate the master suite.



PARTIAL
GROUND FLOOR PLAN
END UNIT

PARTIAL
GROUND FLOOR PLAN
END UNIT

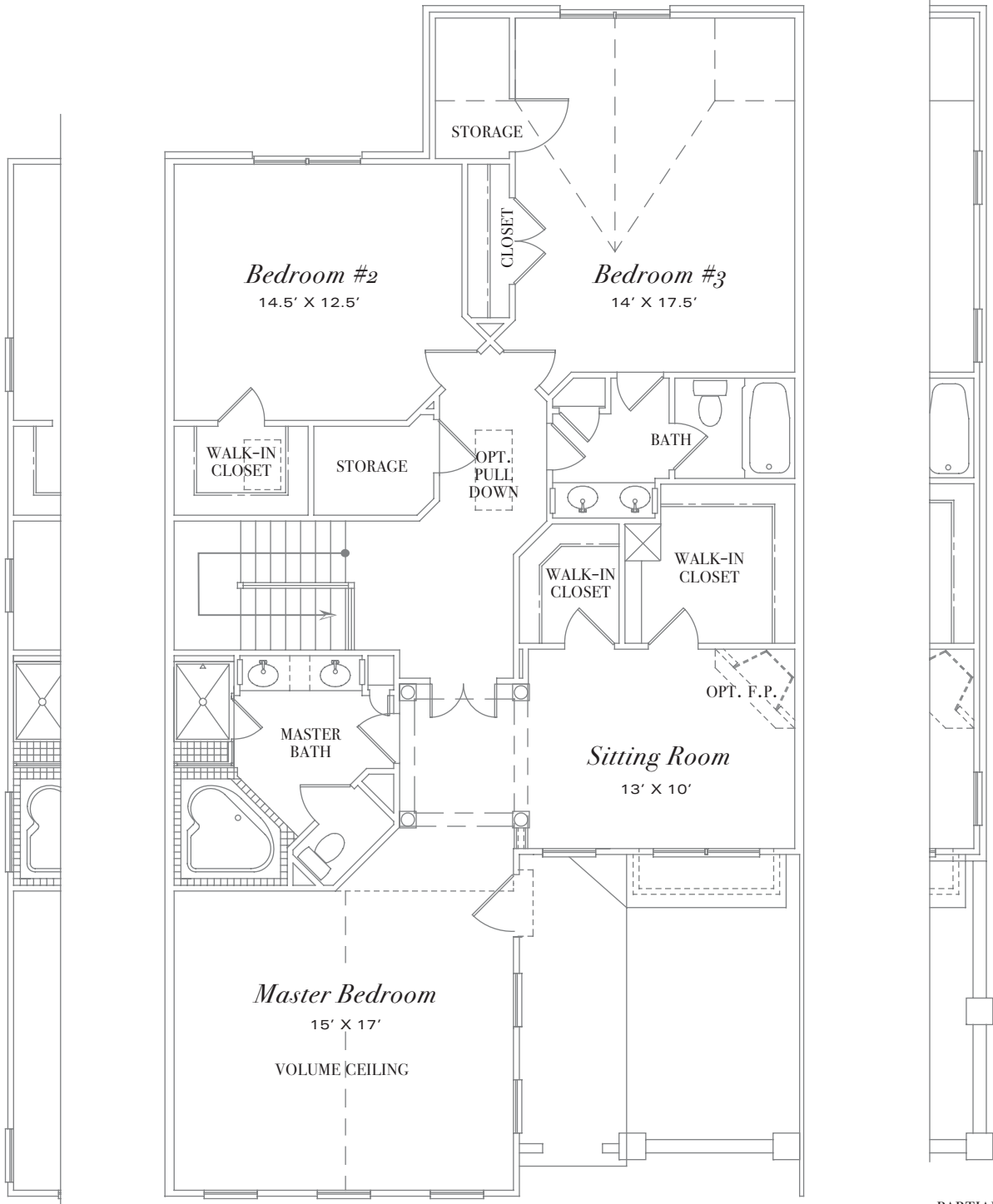
GROUND FLOOR
WITH MASTER BEDROOM UP

CEILING: 9'

Banbury-A

APPRX. 2,700 SQ. FT.

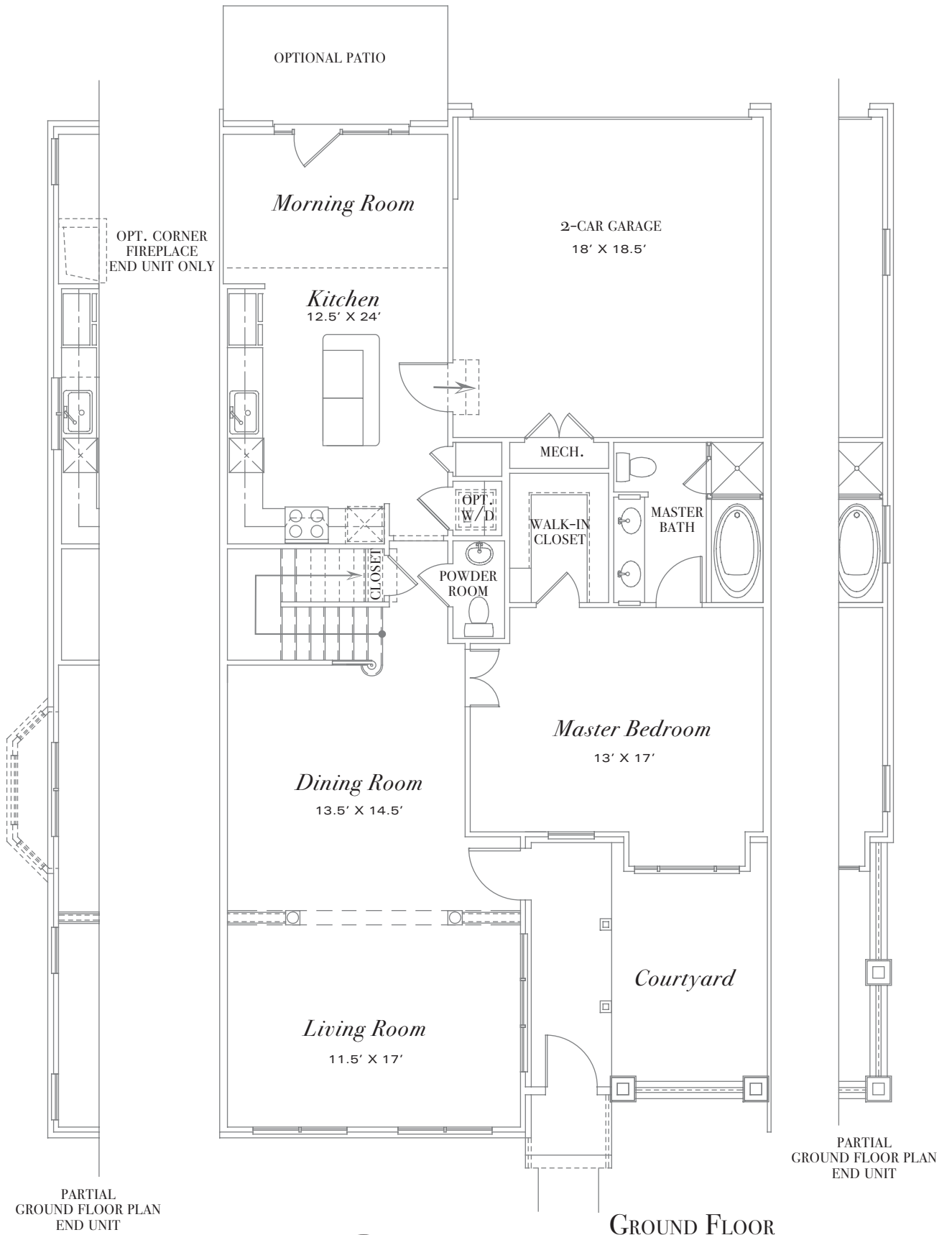
SCALE: 1/8"=1'-0"



PARTIAL
2ND FLOOR PLAN
END UNIT

PARTIAL
2ND FLOOR PLAN
END UNIT

2nd FLOOR
WITH MASTER BEDROOM UP
CEILING: 8'



GROUND FLOOR

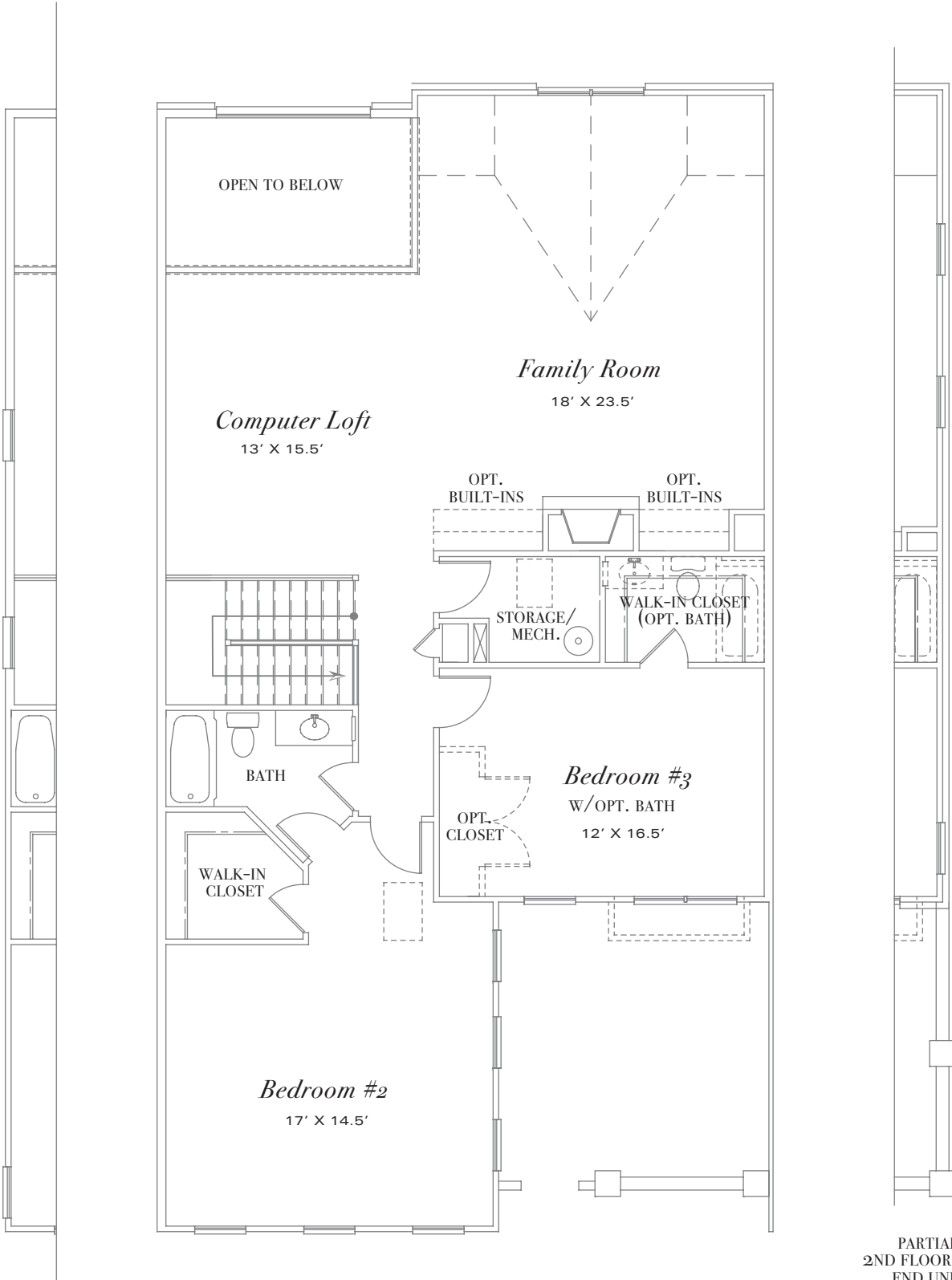
WITH MASTER BEDROOM DOWN

CEILING: 9'

Banbury - B

APPRX. 2,700 SQ. FT.

SCALE: 1/8" = 1'-0"



PARTIAL
2ND FLOOR PLAN
END UNIT

PARTIAL
2ND FLOOR PLAN
END UNIT

2nd FLOOR
WITH MASTER BEDROOM DOWN
CEILING: 8'