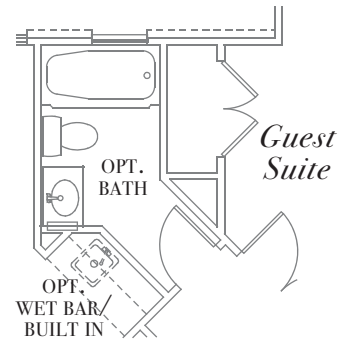
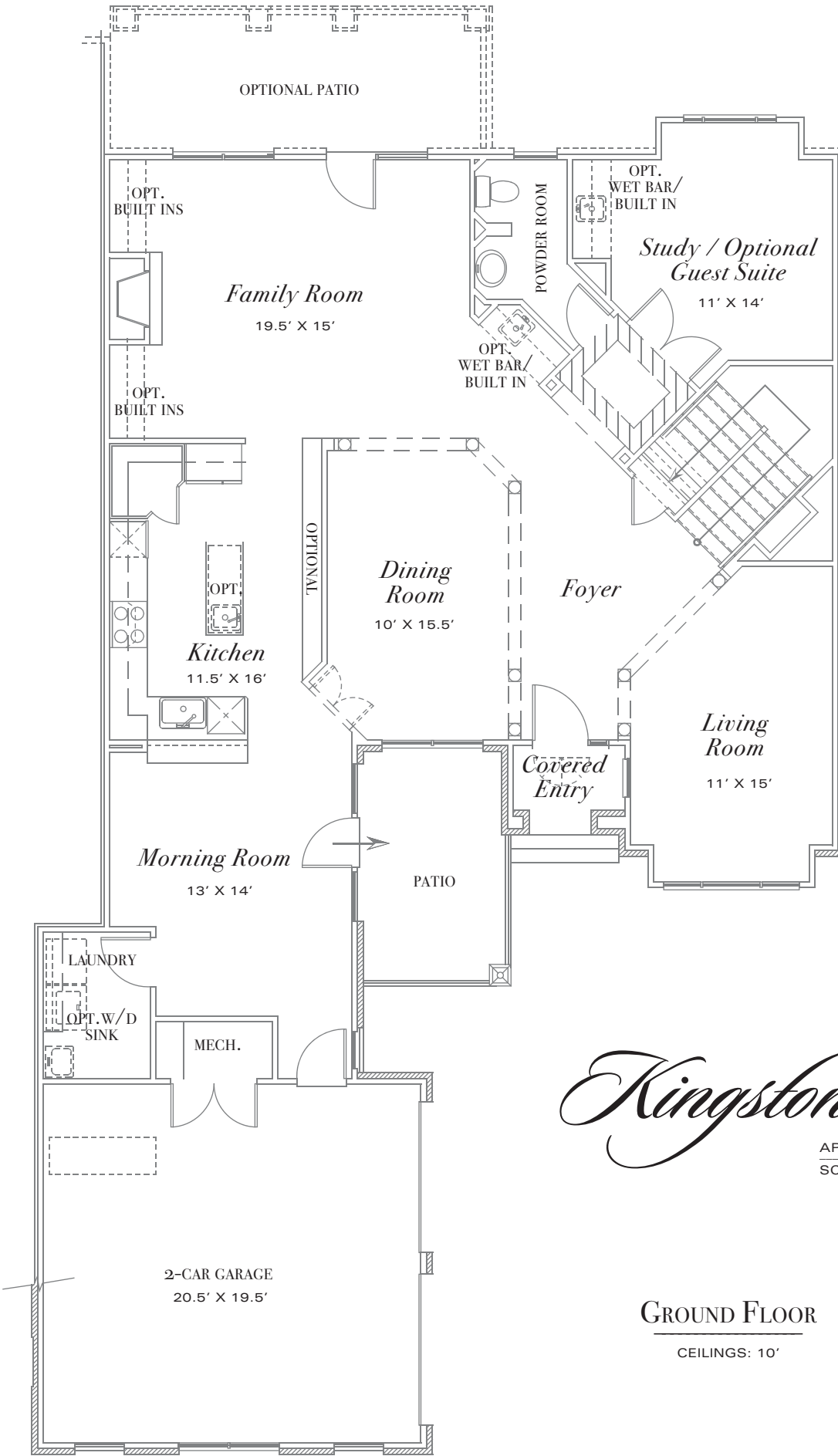


# *Kingston*

Inspired by traditional 18th century architecture,  
Grayson Hill presents these classic modern homes for your enjoyment.  
Our homes exemplify gracious living by defining a new era of luxury lifestyle.  
This grand home is part of our Executive building. It blends formal and informal  
rooms seamlessly, offering ten foot ceilings throughout the first floor.  
A beautiful kitchen with ample counter space, morning room, and spacious family room  
occupy the first floor. The second floor offers nine-foot ceilings,  
a master bedroom suite with charming sitting room, his/her closets, and  
luxurious bath. An optional master suite is available on the first floor of this home.



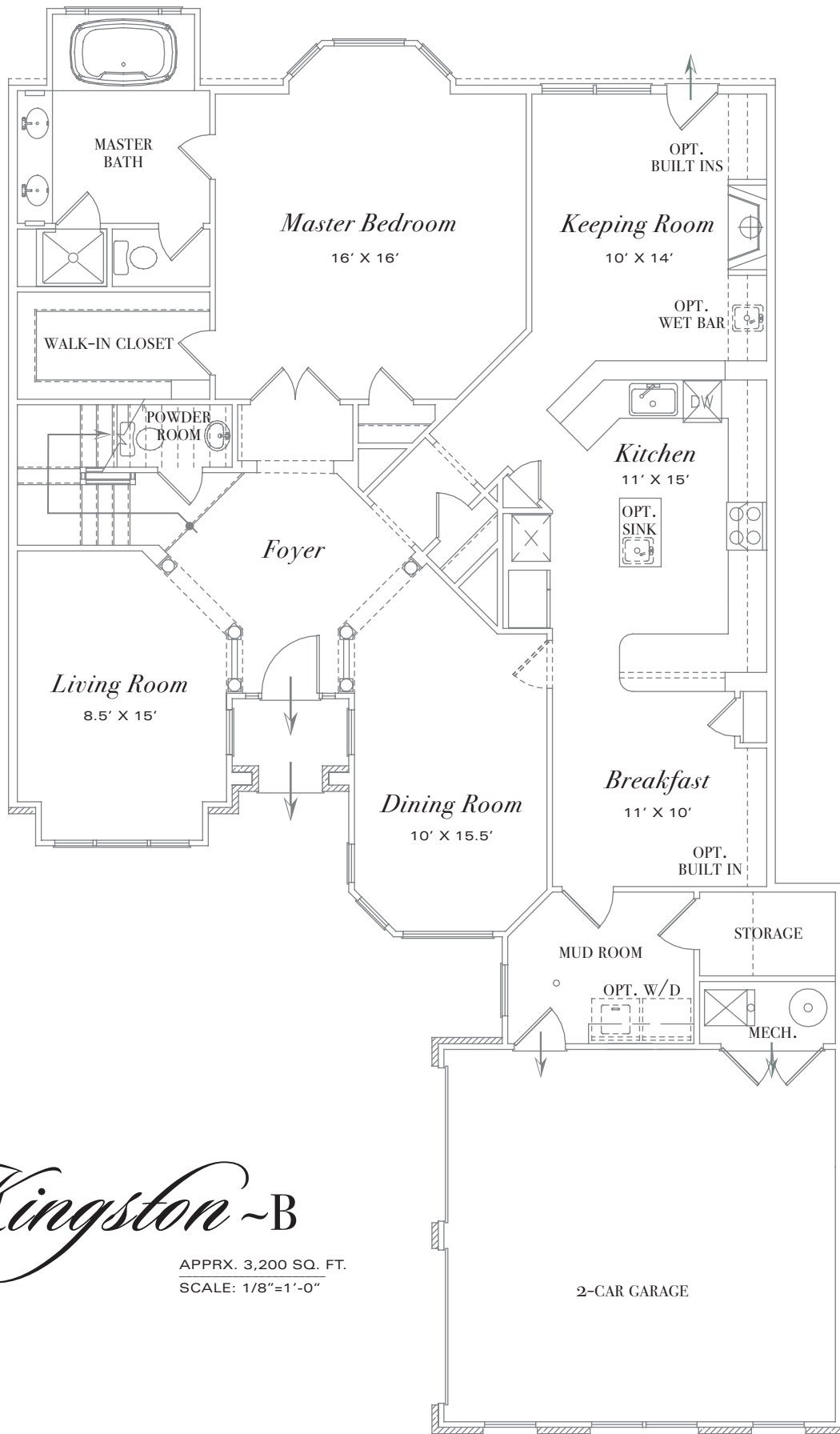
**PARTIAL  
GROUND FLOOR**  
WITH OPTIONAL BATH

# Kingston-A

APPRX. 3,200 SQ. FT.  
SCALE: 1/8"=1'-0"

## GROUND FLOOR

CEILINGS: 10'

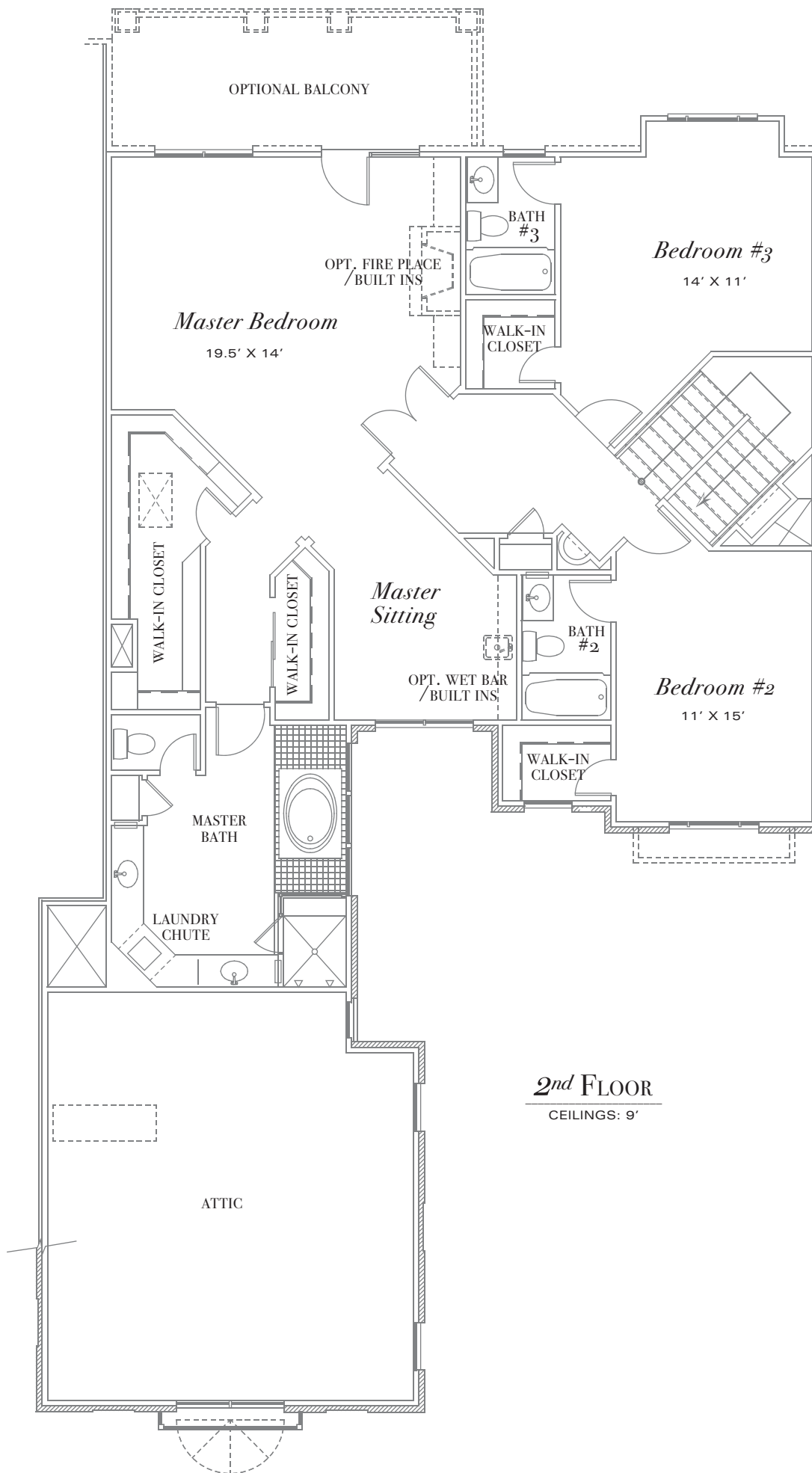


# Kingston-B

APPRX. 3,200 SQ. FT.  
SCALE: 1/8"=1'-0"

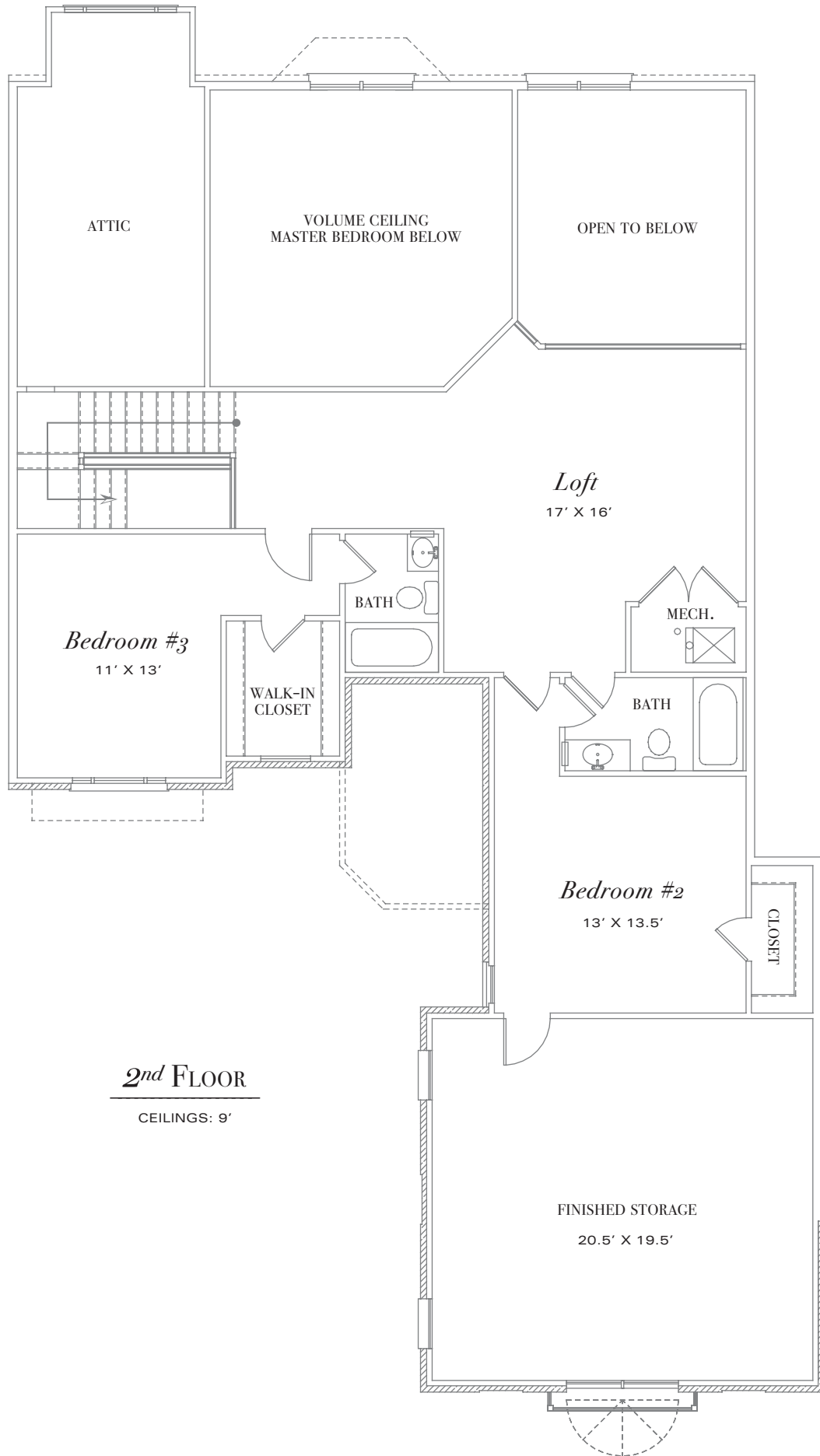
## GROUND FLOOR

CEILINGS: 10'



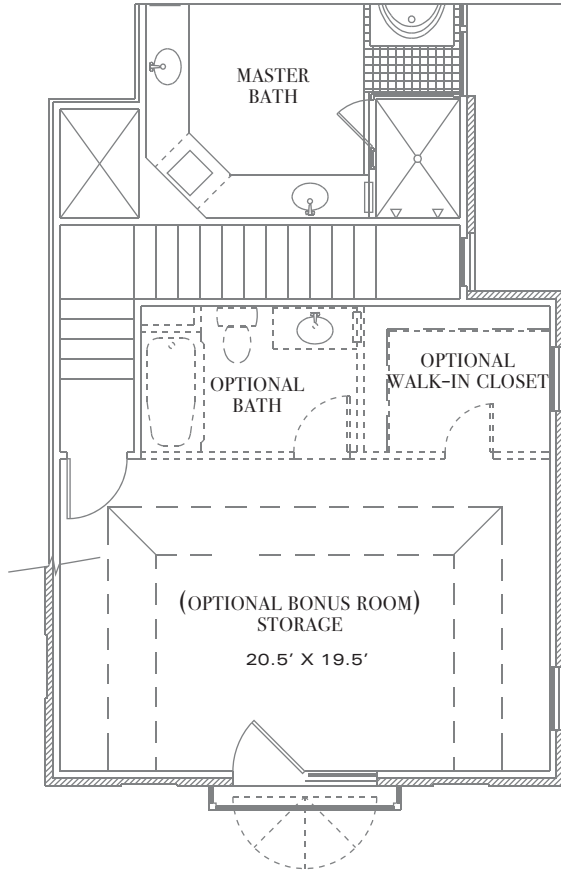
**2<sup>nd</sup> FLOOR**

CEILINGS: 9'

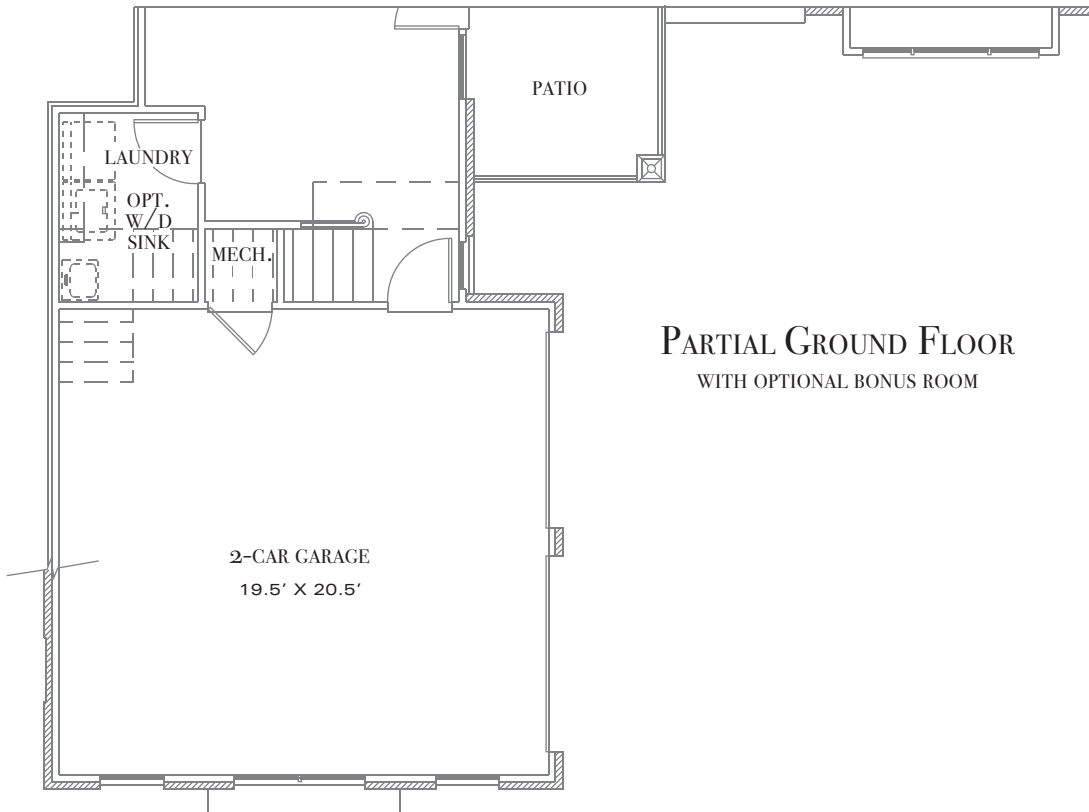


**2nd FLOOR**

CEILINGS: 9'



**PARTIAL 2<sup>nd</sup> FLOOR**  
WITH OPTIONAL BONUS ROOM



**PARTIAL GROUND FLOOR**  
WITH OPTIONAL BONUS ROOM